



型号说明 Ordering Information

PBS-10B-2

- 改进2型 Improved type 2
- 电路特性 Circuitry trait
- 产品序号 Product order
- 按钮开关 Push-button switch

技术特性 Specification

- 1.规格 Rating:3A 125VAC;1A 250VAC
- 2.接触电阻 Contact Resistance:20mΩ max
- 3.绝缘电阻 Insulation Resistance:500VDC 100MΩ min
- 4.耐电压 Dielectric Strength:1000VAC, 1Minute
- 5.操作温度 Operating Temperature:-25℃ ~ +85℃
- 6.电气寿命 Electrical Life:50,000 Cycles

电路特性 Circuitry trait

A	ON - OFF	Push on/Push off	With lock
B	(ON) - OFF	Push on	Momentary(Open type)
C	ON - (OFF)	Push off	Momentary(Close type)

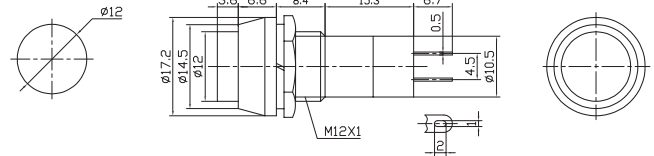
():回弹指示 Indicates Momentary

按钮颜色 Push-button color

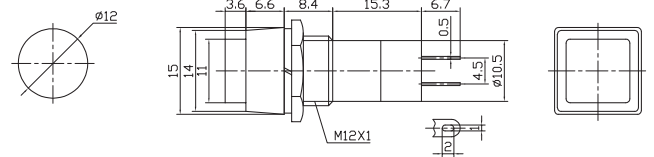
红 Red	白 White
绿 Green	黑 Black
桔黄 Orange	黄 Yellow
蓝 Blue	



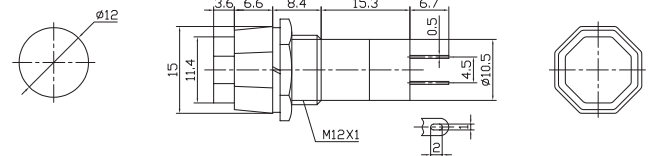
- PBS-11A ON-OFF
- PBS-11B OFF-(ON)
- PBS-11C ON-(OFF)



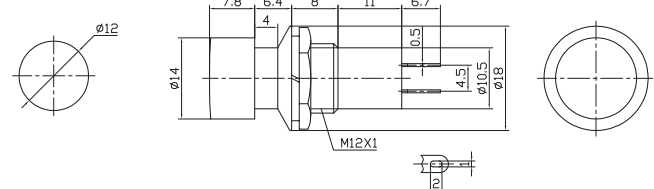
- PBS-12A ON-OFF
- PBS-12B OFF-(ON)
- PBS-12C ON-(OFF)



- PBS-14A ON-OFF
- PBS-14B OFF-(ON)
- PBS-14C ON-(OFF)



- PBS-16A ON-OFF
- PBS-16B OFF-(ON)
- PBS-16C ON-(OFF)





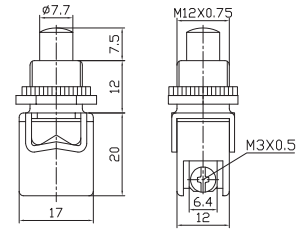
按钮开关

Push-Button Switch

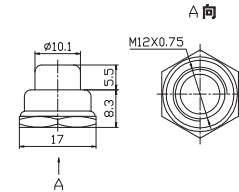
PBS Series



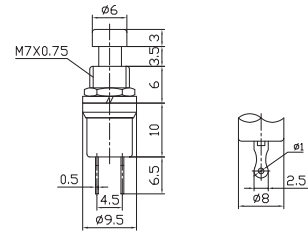
PBS-13B OFF-(ON)
PBS-13C ON-(OFF)
 8A 125VAC; 4A 250VAC



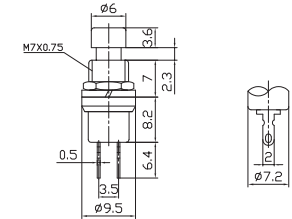
WPC-13
 M12 x 0.75



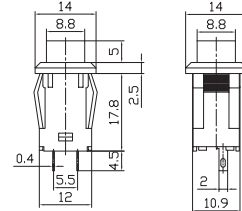
PBS-10B OFF-(ON)
 (Plastic rod)



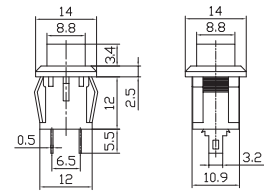
PBS-10B-2 OFF-(ON)
PBS-10C-2 ON-(OFF)
 (Metal rod)



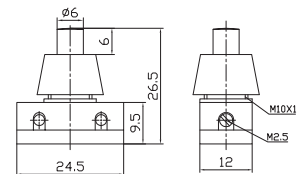
PBS-15A ON-OFF



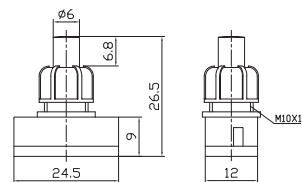
PBS-15B OFF-(ON)
PBS-15C ON-(OFF)



PBS-17A ON-OFF
 4A 125VAC; 2A 250VAC



PBS-17A-2 ON-OFF
 (原PBS-17B)





按钮开关

Push-Button Switch

PBS Series

	<p>PBS-17A-3 ON-OFF 4A 125VAC;2A 250VAC</p>	
	<p>PBS-18B OFF-(ON) 25mA 50VACorDC</p>	
	<p>PBS-19-111 ON-(OFF) SPST 2P PBS-19-112 ON-(ON) SPDT 3P 6A 250VAC;10A 125VAC</p>	
	<p>PBS-19B OFF-(ON) PBS-19C ON-(OFF) 5A 125VAC;2.5A 250VAC</p>	
	<p>PBS-19B-2 OFF-(ON) PBS-19C-2 ON-(OFF) L=54.6 PBS-19B-3 OFF-(ON) PBS-19C-3 ON-(OFF) L=44.6 5A 125VAC;2.5A 250VAC</p>	
	<p>PBS-20A-2 ON-OFF PBS-20B-2 OFF-(ON)</p>	
	<p>PBS-24B-2 OFF-(ON) PBS-24C-2 ON-(OFF) 10A 125VAC;6A 250VAC SPST 2P</p>	



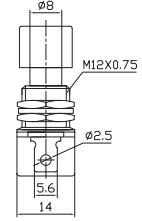
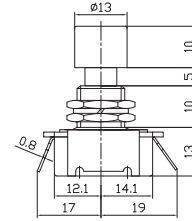
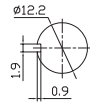
按钮开关

Push-Button Switch

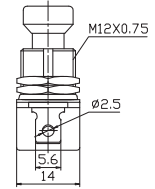
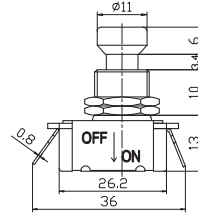
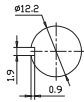
PBS Series



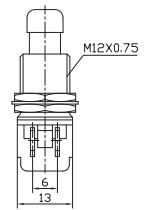
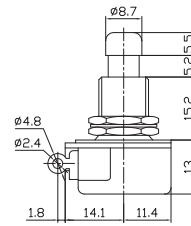
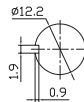
PBS-24A-3 ON-OFF
6A 250VAC;10A 125VAC



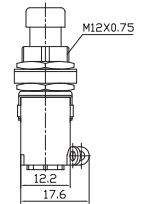
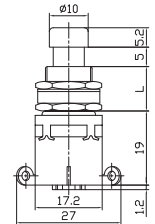
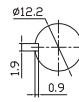
PBS-24B-3 (ON)-OFF
6A 250VAC;10A 125VAC



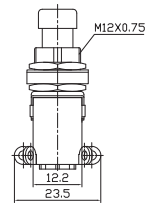
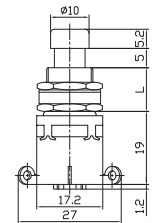
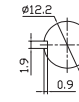
PBS-24B-4 OFF-(ON)
2A 250VAC;4A 125VAC



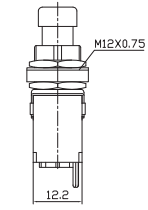
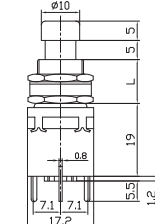
PBS-24-102 ON-ON
PBS-24-112 ON-(ON)
2A 250VAC;4A 125VAC
SPDT 3P
(L=14.2, 11.8, 9.8)



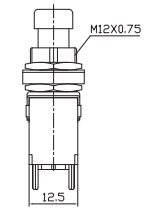
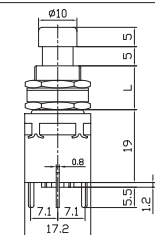
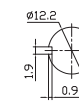
PBS-24-202 ON-ON
PBS-24-212 ON-(ON)
2A 250VAC;4A 125VAC
DPDT 6P
(L=14.2, 11.8, 9.8)



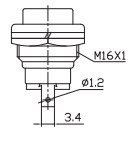
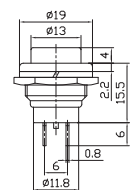
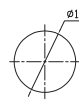
PBS-24-102P ON-ON
PBS-24-112P ON-(ON)
2A 250VAC;4A 125VAC
SPDT 3P
(PC terminal)
(L=14.2, 11.8, 9.8)



PBS-24-202P ON-ON
PBS-24-212P ON-(ON)
2A 250VAC;4A 125VAC
DPDT 6P
(PC terminal)
(L=14.2, 11.8, 9.8)



PBS-26B OFF-(ON)
PBS-26C ON-(OFF)
4A 125VAC;2A 250VAC





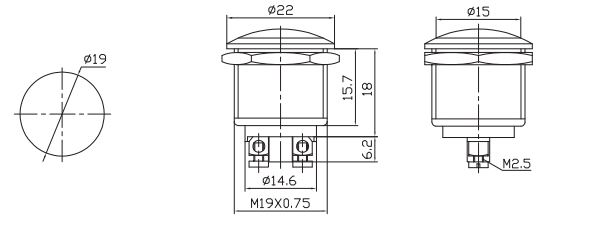
按钮开关

Push-Button Switch

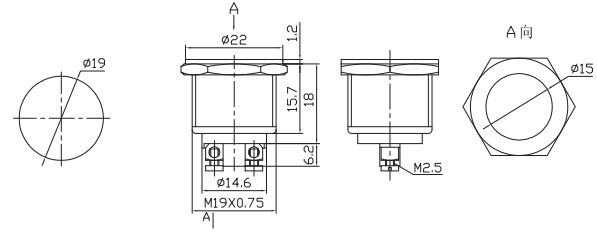
PBS Series



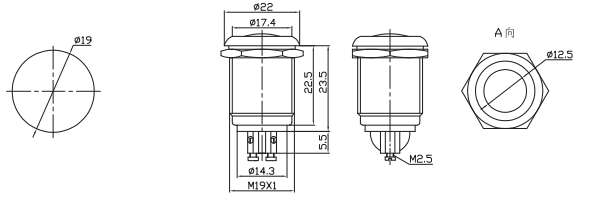
PBS-28B OFF-(ON)
PBS-28C ON-(OFF)
PBS-28B-W OFF-(ON)
PBS-28C-W ON-(OFF)
 4A 125VAC;2A 250VAC
 "W" Means The Switch Has
 Waterproof Rubber Ring(IP66)



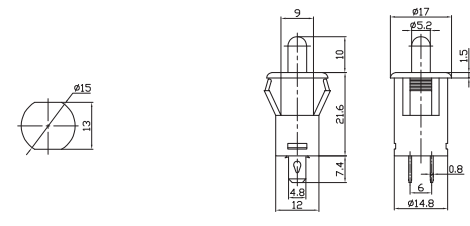
PBS-28B-2 OFF-(ON)
PBS-28C-2 ON-(OFF)
PBS-28B-2-W OFF-(ON)
PBS-28C-2-W ON-(OFF)
 4A 125VAC;2A 250VAC
 "W" Means The Switch Has
 Waterproof Rubber Ring(IP66)



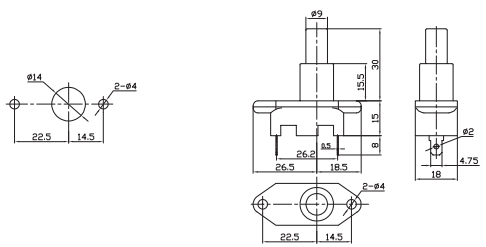
PBS-28B-3 OFF-(ON)
 4A 125VAC;2A 250VAC
 IP66
 With Waterproof Rubber Ring



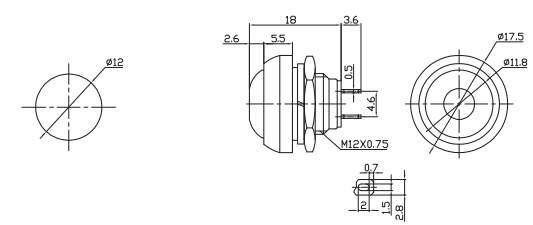
PBS-29B OFF-(ON)



PBS-32B OFF-(ON)
 10A 125VAC;6A 250VAC



PBS-33B OFF-(ON)



PBS-34B OFF-(ON)
 10A 125VAC;6A 250VAC

