



型号说明 Ordering Information

PBS-10B-2

- 改进2型 Improved type 2
- 电路特性 Circuitry trait
- 产品序号 Product order
- 按钮开关 Push-button switch

技术特性 Specification

- 1.规格 Rating:3A 125VAC;1A 250VAC
- 2.接触电阻 Contact Resistance:20mΩ max
- 3.绝缘电阻 Insulation Resistance:500VDC 100MΩ min
- 4.耐电压 Dielectric Strength:1000VAC, 1Minute
- 5.操作温度 Operating Temperature:-25℃ ~ +85℃
- 6.电气寿命 Electrical Life:50,000 Cycles

电路特性 Circuitry trait

A	ON - OFF	Push on/Push off	With lock
B	(ON) - OFF	Push on	Momentary(Open type)
C	ON - (OFF)	Push off	Momentary(Close type)

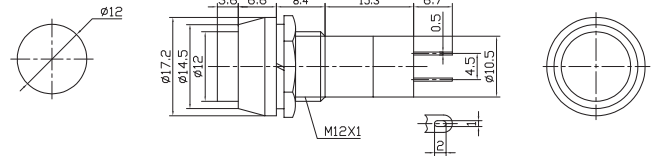
( ):回弹指示 Indicates Momentary

按钮颜色 Push-button color

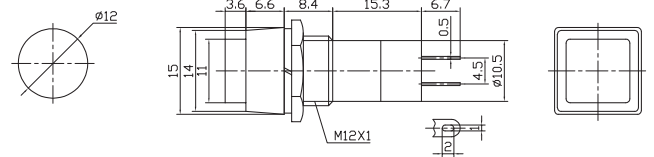
红 Red	白 White
绿 Green	黑 Black
桔黄 Orange	黄 Yellow
蓝 Blue	



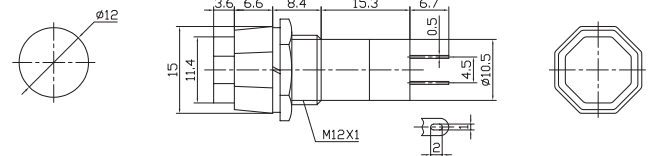
- PBS-11A ON-OFF
- PBS-11B OFF-(ON)
- PBS-11C ON-(OFF)



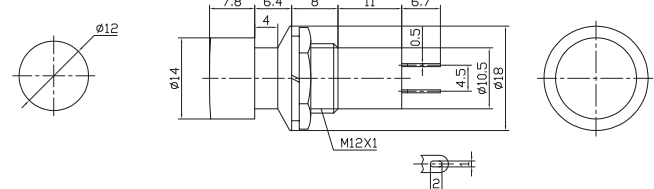
- PBS-12A ON-OFF
- PBS-12B OFF-(ON)
- PBS-12C ON-(OFF)



- PBS-14A ON-OFF
- PBS-14B OFF-(ON)
- PBS-14C ON-(OFF)



- PBS-16A ON-OFF
- PBS-16B OFF-(ON)
- PBS-16C ON-(OFF)





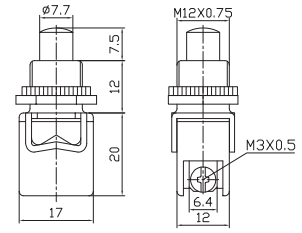
# 按钮开关

# Push-Button Switch

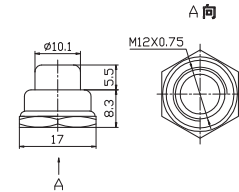
# PBS Series



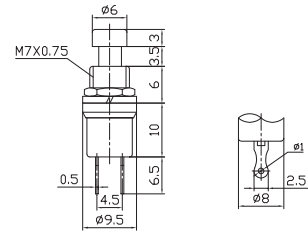
**PBS-13B** OFF-(ON)  
**PBS-13C** ON-(OFF)  
 8A 125VAC; 4A 250VAC



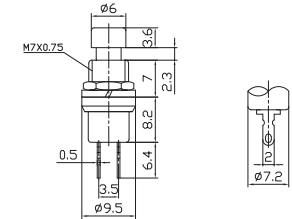
**WPC-13**  
 M12 x 0.75



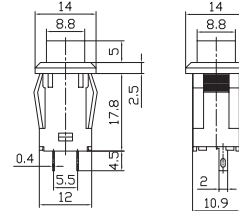
**PBS-10B** OFF-(ON)  
 (Plastic rod)



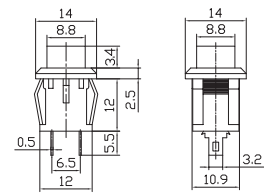
**PBS-10B-2** OFF-(ON)  
**PBS-10C-2** ON-(OFF)  
 (Metal rod)



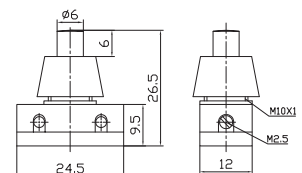
**PBS-15A** ON-OFF



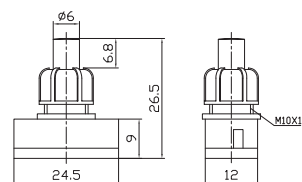
**PBS-15B** OFF-(ON)  
**PBS-15C** ON-(OFF)



**PBS-17A** ON-OFF  
 4A 125VAC; 2A 250VAC



**PBS-17A-2** ON-OFF  
 (原PBS-17B)







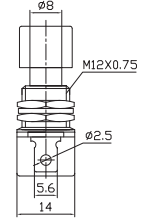
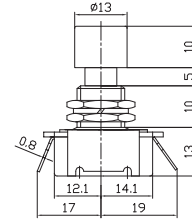
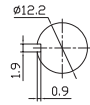
# 按钮开关

# Push-Button Switch

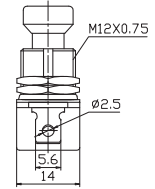
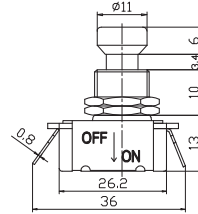
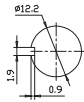
# PBS Series



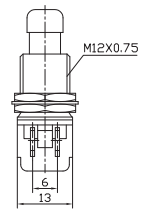
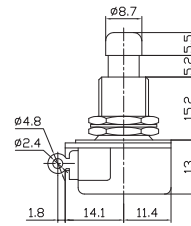
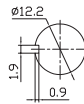
**PBS-24A-3** ON-OFF  
6A 250VAC;10A 125VAC



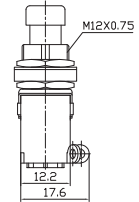
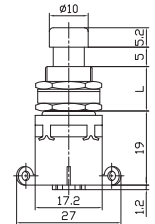
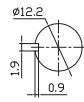
**PBS-24B-3** (ON)-OFF  
6A 250VAC;10A 125VAC



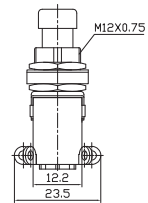
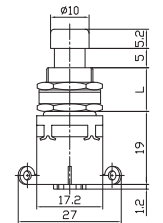
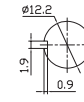
**PBS-24B-4** OFF-(ON)  
2A 250VAC;4A 125VAC



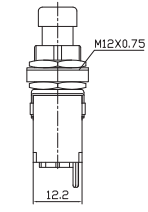
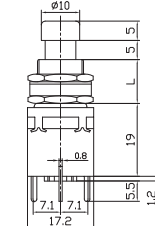
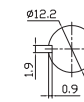
**PBS-24-102** ON-ON  
**PBS-24-112** ON-(ON)  
2A 250VAC;4A 125VAC  
SPDT 3P  
(L=14.2, 11.8, 9.8)



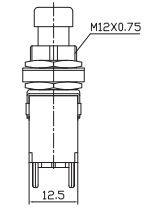
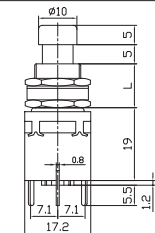
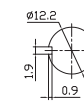
**PBS-24-202** ON-ON  
**PBS-24-212** ON-(ON)  
2A 250VAC;4A 125VAC  
DPDT 6P  
(L=14.2, 11.8, 9.8)



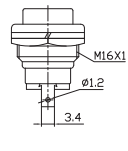
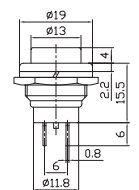
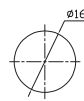
**PBS-24-102P** ON-ON  
**PBS-24-112P** ON-(ON)  
2A 250VAC;4A 125VAC  
SPDT 3P  
(PC terminal)  
(L=14.2, 11.8, 9.8)



**PBS-24-202P** ON-ON  
**PBS-24-212P** ON-(ON)  
2A 250VAC;4A 125VAC  
DPDT 6P  
(PC terminal)  
(L=14.2, 11.8, 9.8)



**PBS-26B** OFF-(ON)  
**PBS-26C** ON-(OFF)  
4A 125VAC;2A 250VAC





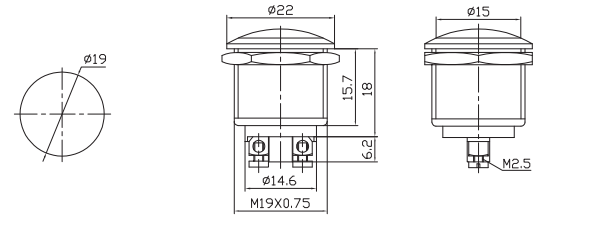
# 按钮开关

# Push-Button Switch

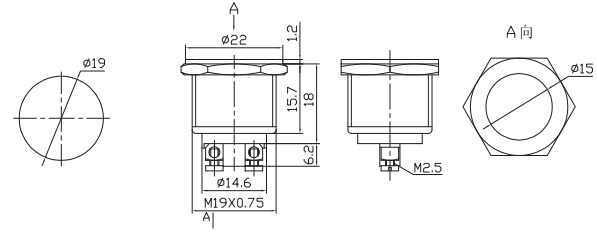
# PBS Series



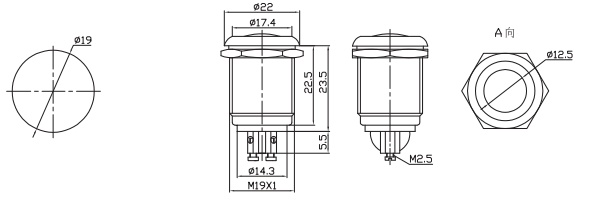
**PBS-28B** OFF-(ON)  
**PBS-28C** ON-(OFF)  
**PBS-28B-W** OFF-(ON)  
**PBS-28C-W** ON-(OFF)  
 4A 125VAC;2A 250VAC  
 "W" Means The Switch Has  
 Waterproof Rubber Ring(IP66)



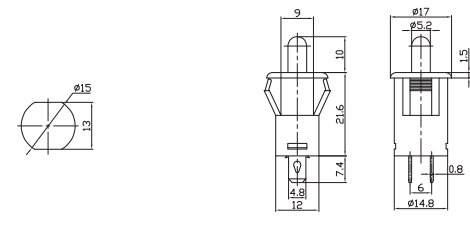
**PBS-28B-2** OFF-(ON)  
**PBS-28C-2** ON-(OFF)  
**PBS-28B-2-W** OFF-(ON)  
**PBS-28C-2-W** ON-(OFF)  
 4A 125VAC;2A 250VAC  
 "W" Means The Switch Has  
 Waterproof Rubber Ring(IP66)



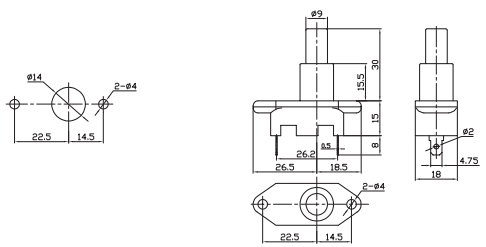
**PBS-28B-3** OFF-(ON)  
 4A 125VAC;2A 250VAC  
 IP66  
 With Waterproof Rubber Ring



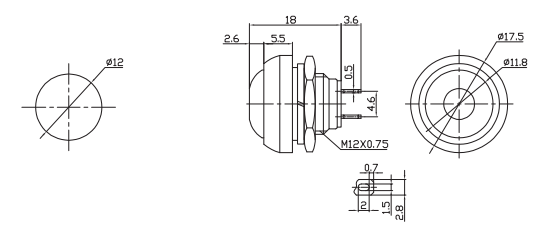
**PBS-29B** OFF-(ON)



**PBS-32B** OFF-(ON)  
 10A 125VAC;6A 250VAC



**PBS-33B** OFF-(ON)



**PBS-34B** OFF-(ON)  
 10A 125VAC;6A 250VAC

