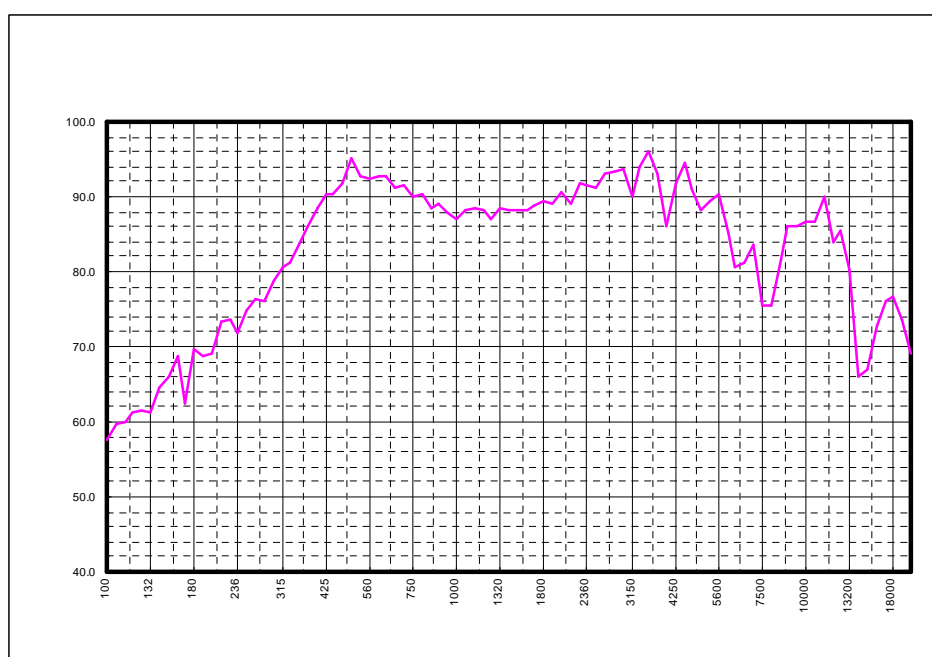
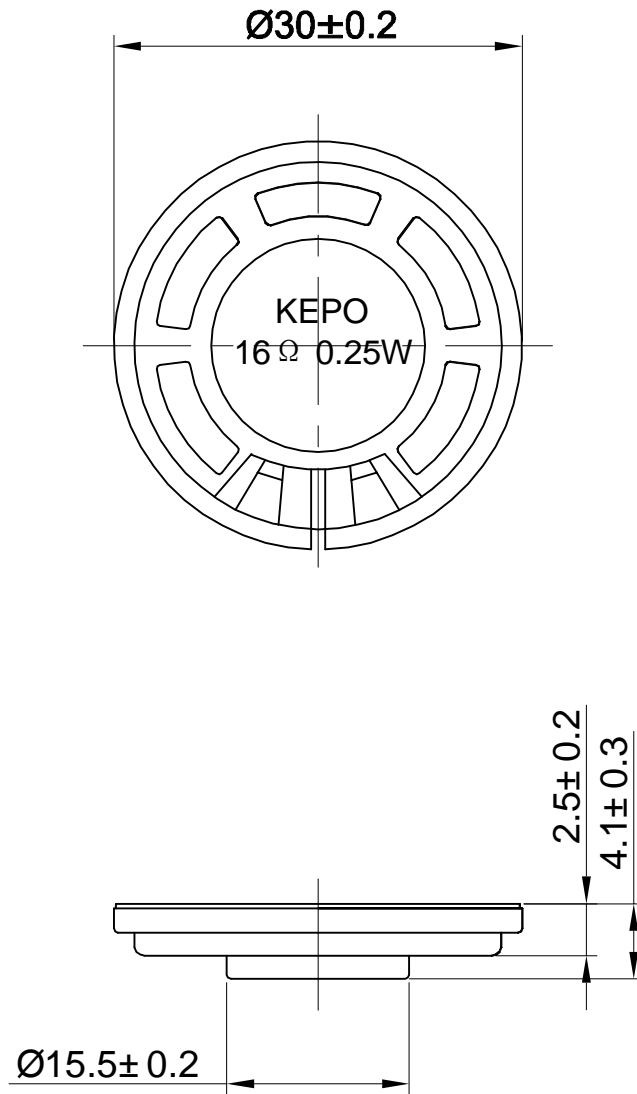


Speaker Specification

| Customer's Model No. | | Customer | | CompoNet | |
|----------------------|--------------------------------|---|------------------------------|----------|------------|
| Kepo Model No. | | KPSP3040MN-16/0.25A | Size | Φ 30mm | No. J21937 |
| No. | Item | Specification | Test Condition | | |
| 1 | Impedance | 16Ω ± 15% | at 800Hz | | |
| 2 | Resonant Fr. (f _o) | 600Hz ± 20% | | | |
| 3 | Frequency Range | F0-8.0KHz | | | |
| 4 | Rated Power | 0.25W | | | |
| 5 | Max Power | 0.3W | | | |
| 6 | S.P.L. | 87 ± 3dB | 0.1W / 0.1M at 1.0KHz | | |
| 7 | Distortion | Max 5% | at rated power 1.0KHz | | |
| 8 | Sweep Test | must be normal | at sine wave 2V | | |
| 9 | Load Test | after test meet item 8 | rated noise power, 24 Hrs. | | |
| 10 | Heat Test | after test meet item 8 | 50 ± 2 °C 5Hrs. | | |
| 11 | Cold Test | after test meet item 8 | -20 ± 2 °C 5Hrs. | | |
| 12 | Humidity Test | after test meet item 8 | 40 ± 2 °C, 90/95% R.H. 5Hrs. | | |
| 13 | Weight | | | | |
| 14 | Polarity Test | When supplied plus D.C. voltage to (+) terminal, the cone must move to forward. | | | |
| 15 | Note | | | | |



Dimensions:



FIRST ANGLE PROJECTION

UNIT : mm
Tolerance : ± 0.2